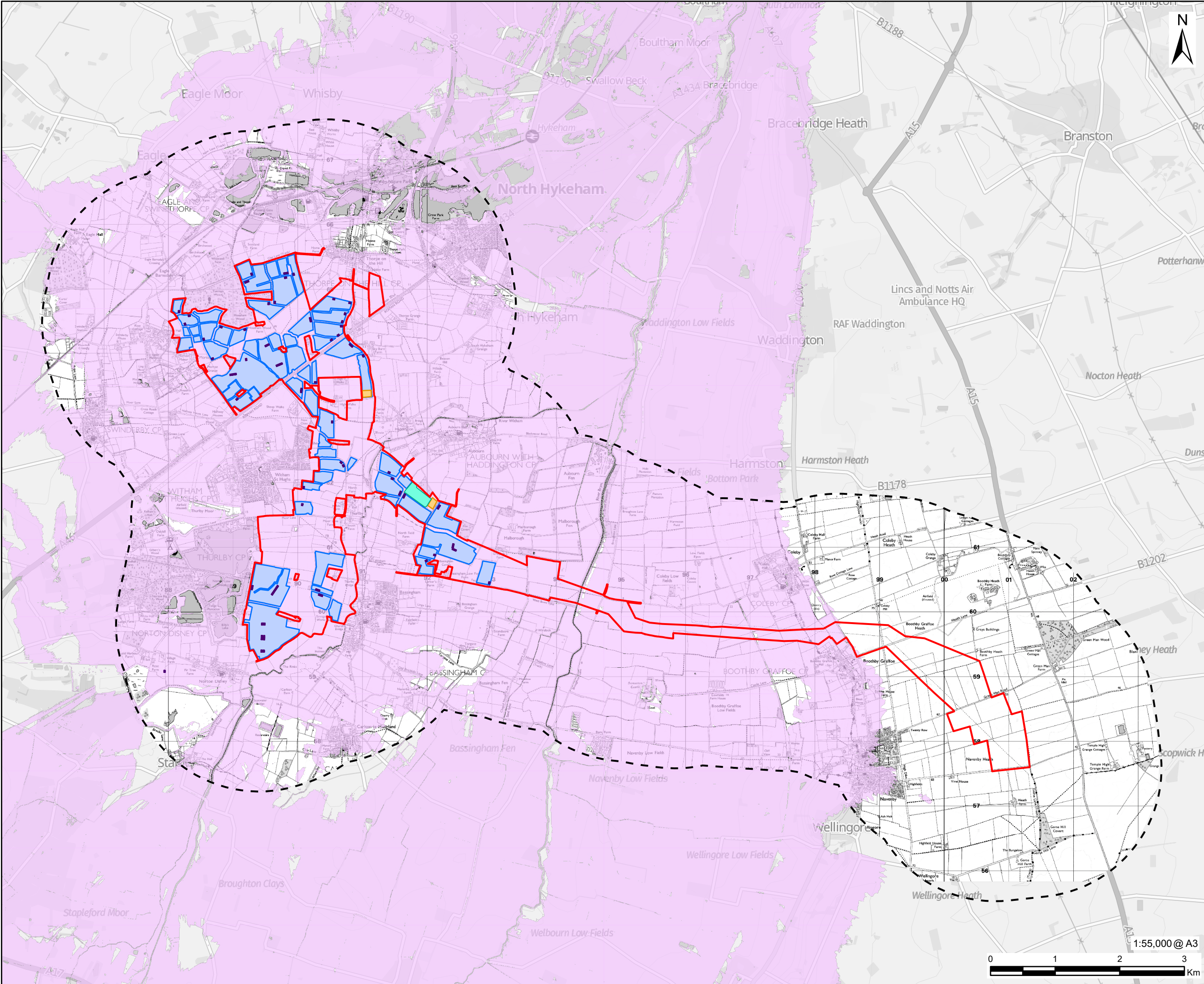


F:\aecomnet\com\GIS\London\UK\London\Legacy\UK\ONB\PPF3\W001\VT\DP\Library\GIS\_DATA\Projects\Fosse Green Energy Park\12\_Maps\Environmental Statement\Chapter 10 - Landscape and Visual Amenities\ES\_Chapter10\_LandscapeAndVisual\_Figures.aprx

Project No. : 60700987 Drawn: HW Checked: AM Approved: LB Date: 2025-06-18



PROJECT

Fosse Green Energy

CLIENT

Fosse Green Energy Ltd

CONSULTANT

AECOM Limited  
Sunley House  
4 Bedford Park  
Surrey, CR0 2AP, UK  
www.aecom.com

LEGEND

- DCO Site Boundary
- 2km LVIA Study Area
- Zone of Theoretical Visibility
- Solar Panel Area
- Solar Station
- Onsite Substation
- BESS Compound

NOTES

Contains OS data © Crown Copyright and database right 2025  
Contains data from OS Zoomstack Reproduced from Ordnance Survey digital map data © Crown Copyright [2025]. All rights reserved. Ordnance Survey Licence AC0000808122.

- 1) Zone of Theoretical Visibility (ZTV) has been generated using Environment Agency Digital Terrain Model (DTM) with a 1m resolution, which does not take into account the screening effects of vegetation, buildings or any other structures.
- 2) Zone of Theoretical Visibility (ZTV) has been based upon an observer's eye level of 1.60m. It is based on 3.5m high points within the Solar Panel Areas, 13.5m high points across Onsite Substation, 4.5m high points across BESS Compound and 4m high points across the Solar Stations. All points are spaced out evenly on the 100m by 100m grid. All heights mentioned are above ground level (AGL)
- 3) The Zone of Theoretical Visibility (ZTV) is calculated using ArcGIS 10.8.1 Viewshed Tool.

LEGISLATION

Regulation 5(2)(a) Infrastructure Planning (Applications: Prescribed Forms and Procedure) Regulations 2009.

ISSUE PURPOSE

DCO Submission

FIGURE TITLE

Zone of Theoretical Visibility - Bare Earth

FIGURE NUMBER

Figure 10-6

REV.

01

DOCUMENT REFERENCE

EN010154/APP/6.2.

This drawing has been prepared for the use of AECOM's client. It may not be used, modified, reproduced or relied upon by third parties, except as agreed by AECOM or as required by law. AECOM accepts no responsibility, and denies any liability whatsoever, to any party that uses or relies on this drawing without AECOM's express written consent. Do not scale this document. All measurements must be obtained from the stated dimensions.